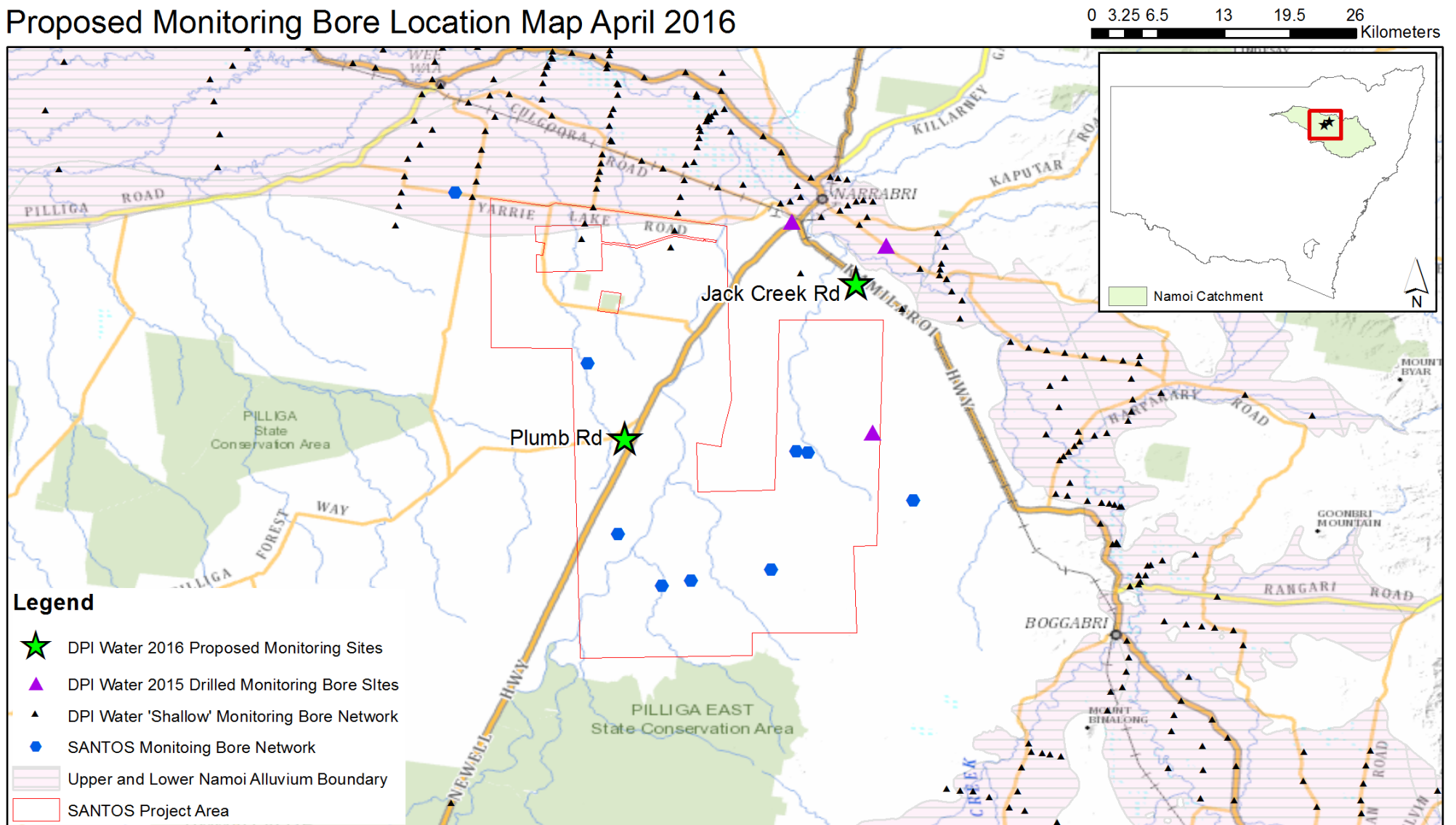


Proposed Monitoring Bore Location Map April 2016



NOTE: The SANTOS shallow monitoring network associated with their treatment infrastructure etc is not included in this map.

Data sources: DPI

The field information contained on this map may not be verified or complete. This map is published by the DPI Water. While every reasonable effort has been made to ensure the accuracy of the information contained in the map, you should satisfy yourself as to the accuracy of the information before relying on it. The State of New South Wales, its agents and employees, disclaim any and all liability to any person in respect of anything or the consequences of anything done or omitted to be done in reliance upon the whole or any part of this map.