



Santos

Narrabri Flowlines Overview

Sept 18th 2013

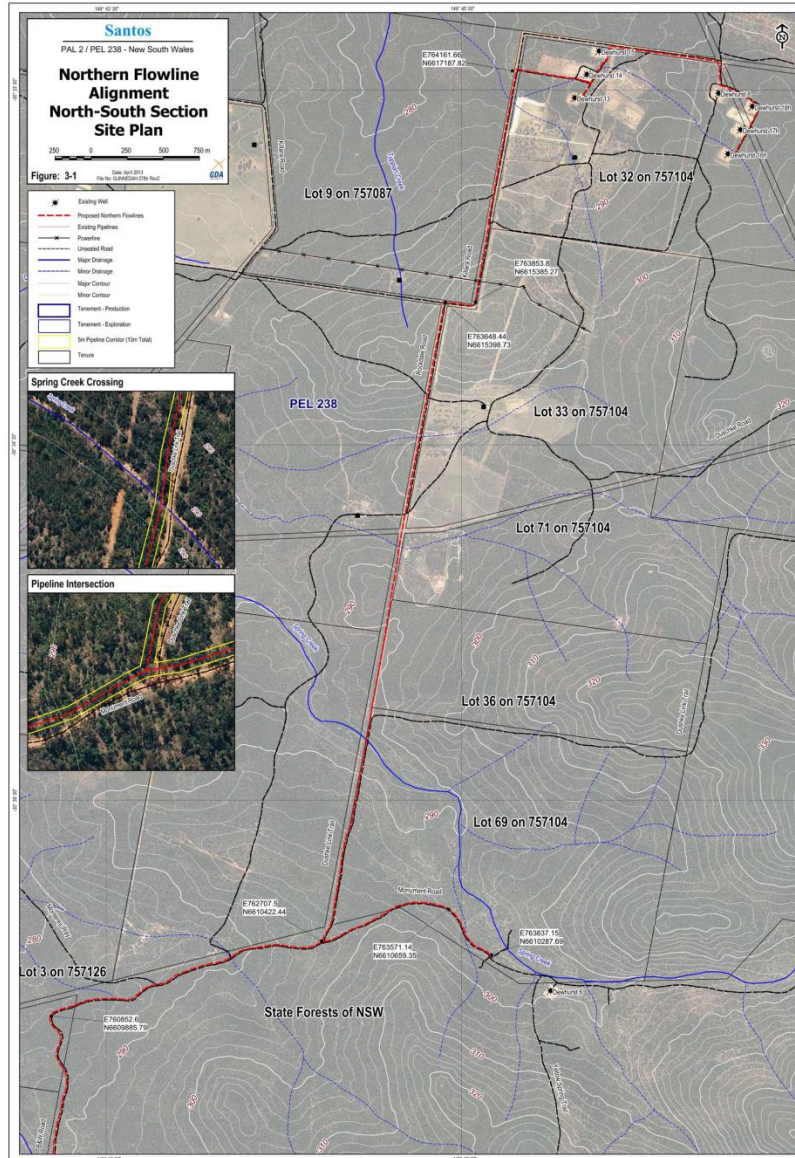
Project Drivers - Summary

- Provide the necessary facilities to allow sustainable CSG production and associated produced water;
- Provide a safe, fit for purpose design wellhead design;
- Protect and enhance Santos' reputation as a high quality operator and supporting positive community and stakeholder relations;
- Minimise footprint;
- To pay high regard to the regulator and achieve environmental and regulatory compliance in the shortest time frame possible;
- Maximise value of the PEL 238 asset;
- Produce CSG to meet sales gas specification; and
- Prove Santos' ability to deliver gas to the NSW market.

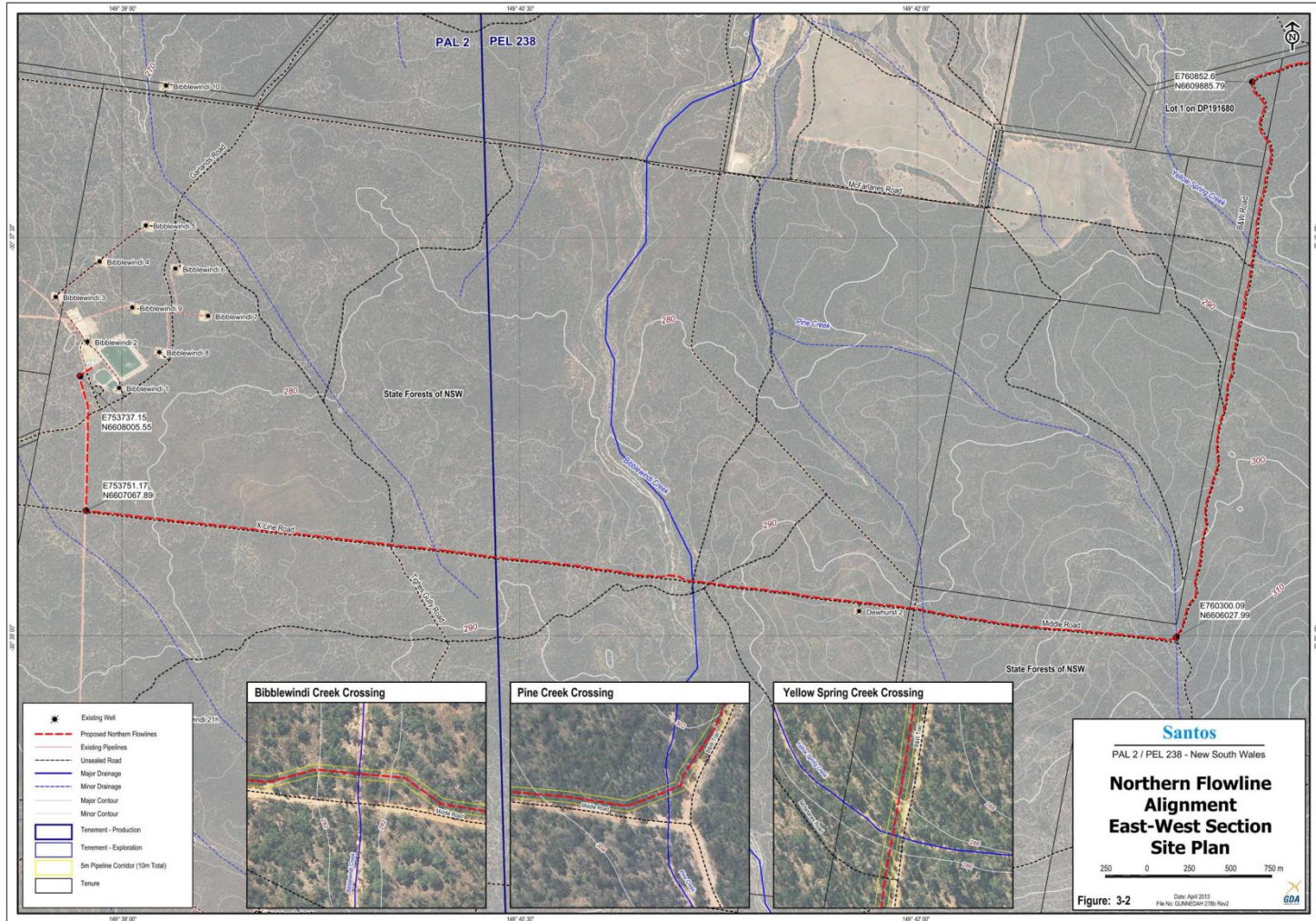
Dewhurst Flowlines Summary

- Proposed to construct and operate gas and water flowlines;
- These flowlines will connect the proposed new wells to the new Leewood Produced Water Facility via the Bibblewindi Water Transfer Facility;
 - The Dewhurst Northern Water flowline will link Dewhurst 6, 13-18 and 22-25 to the Bibblewindi Water Transfer Facility;
 - The Dewhurst Southern Water and Gas flowlines will link Dewhurst 26 – 29 and 30 - 31 pilot to the Bibblewindi Multi Lateral Pilot;
- REF approval for flow lines has been received;
- Flowlines will run parallel to existing tracks and roads as much as possible to minimise clearing (disturbance) during construction;
- A ten metre construction corridor is required and will subsequently be rehabilitated to approximately a three metre operational corridor.

Dewhurst Flowlines Route



Dewhurst Flowlines Route



Santos
PAL 2 / PEL 238 - New South Wales

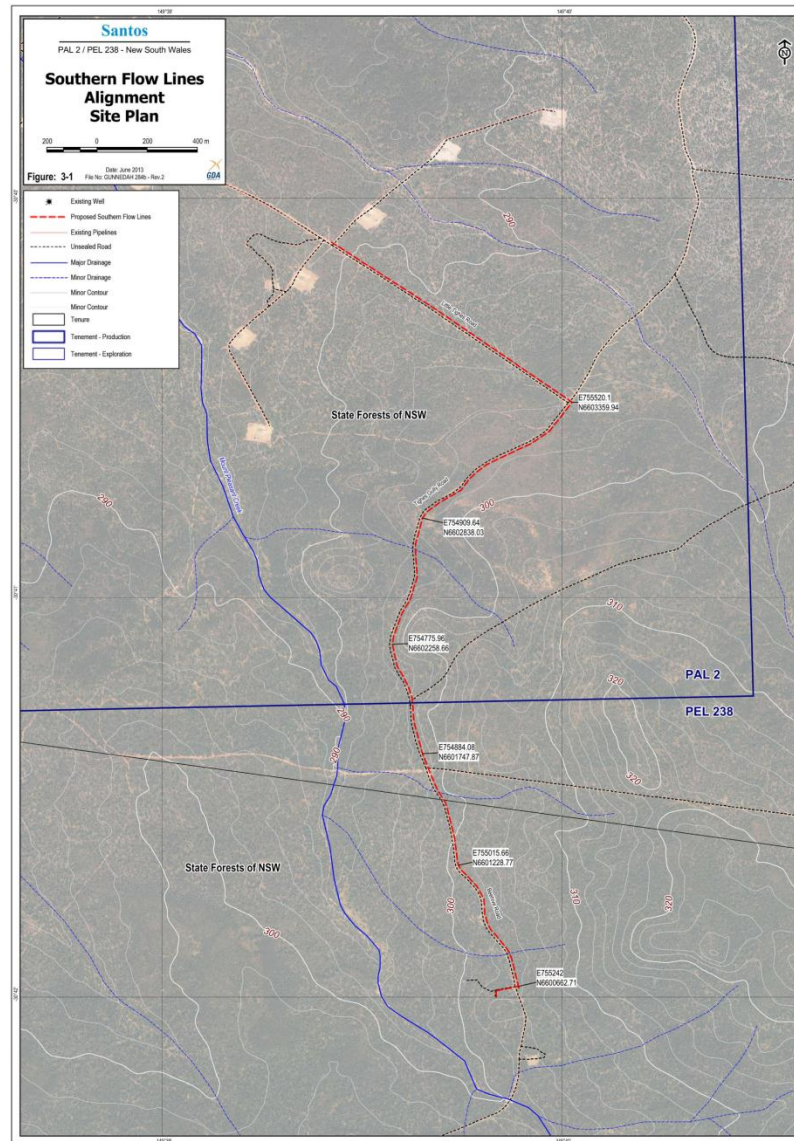
**Northern Flowline Alignment
East-West Section
Site Plan**

250 0 250 500 750 m

Date: April 2013
File No: GUNNINGHAM 170 Rev2

GDA

Dewhurst Flowlines Route



Dewhurst Flowlines



Dewhurst Flowlines



Questions

