

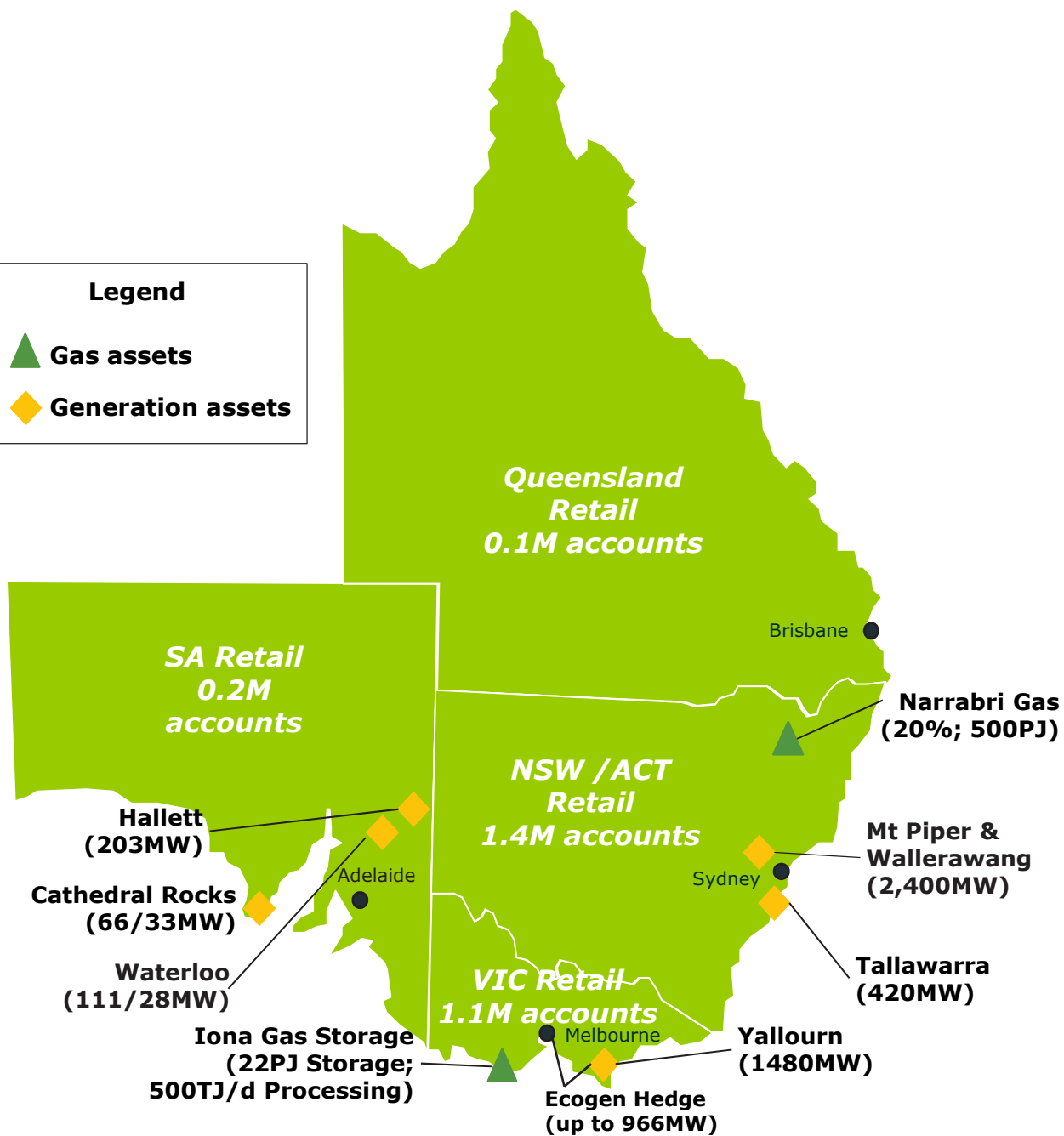
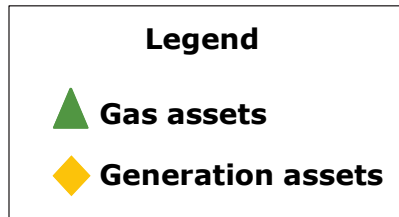
# Narrabri CCC

## EnergyAustralia Introduction

**Kevin Lanigan**  
12 February 2014



**EnergyAustralia**



## EnergyAustralia;

- ✓ One of Australia's largest gas & electricity utilities
- ✓ Largest privately held supplier of generation output to National Electricity Market
- ✓ Third largest Australian energy retailer (22% market share across Eastern Australia by customer accounts)
- ✓ Owns one of the largest underground gas storage facilities, with long-term gas supply contracts
- ✓ Owned by CLP Holdings Limited (listed on Hong Kong stock exchange)
- ✓ Rebranded as EnergyAustralia in Q3 2012

**EnergyAustralia; one of Australia's largest integrated energy companies**



EnergyAustralia



*Residential customers*



*Business customers*



*Commercial & Industrial customers*



*Yallourn power station, VIC*



*Iona gas plant, VIC*



*Cathedral Rocks Wind Farm, SA  
(50% ownership)*



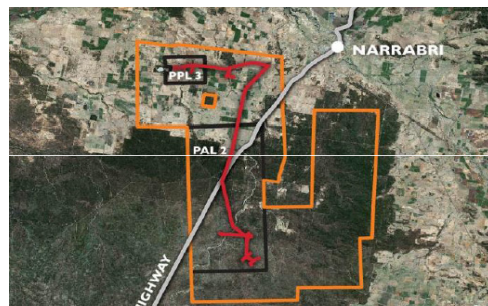
*Tallawarra power station, NSW*



*Hallett power station, SA*



*Waterloo Wind Farm, SA  
(25% ownership)*



*Narrabri Gas Project, NSW  
(20% ownership)*



*Wallerawang power station, NSW*



*Mt Piper power station, NSW*

**EnergyAustralia; one of Australia's largest integrated energy companies**



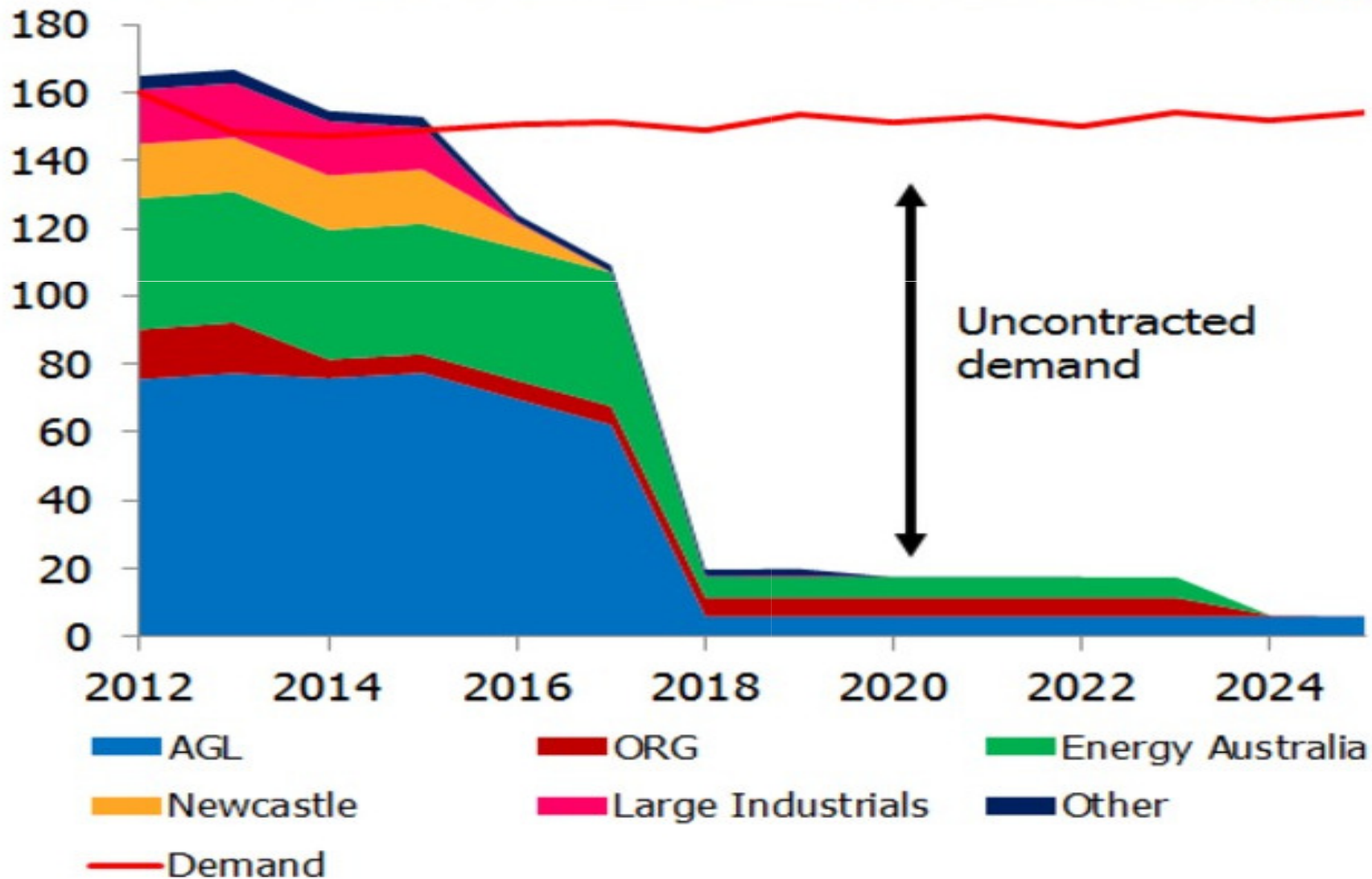
**EnergyAustralia**

- EnergyAustralia prioritises engagement with community stakeholders, neighbours and local interest groups
- Objective is acceptance – obtaining a degree of match between social expectations and corporate behaviour
- Currently conduct formal engagement programs at six major assets across NSW, Victoria and South Australia
- Community feedback and involvement has helped shape delivery of some major projects
- Engagement supported by community investment (sponsorship) and employee participation on local community initiatives

**Community consultation is a priority**



## NSW & ACT Demand and Contracted Supply



**Looming gap between supply and demand**



- EA is a long term participant in the NSW gas market, both as retailer and consumer
- EA supplies 260,000 gas customers in NSW
- We own and operate the Tallawarra Power Station
- NSW is currently heavily reliant on gas imported from other states
- Transformation of gas markets occurring
- Future supply of gas is important for a secure, stable and efficient NSW energy market, now and into the future

### **Tallawarra Power Station**

- 30 employees
- 435MW, super efficient, gas-fired combined cycle power station
- Can supply electricity for over 200,000 homes & businesses
- Australia's most environmentally efficient, large-scale gas-fired power station.
- 65% less carbon dioxide emissions than the average Australian coal-fired plant.



## **EA involvement in NSW gas market**

