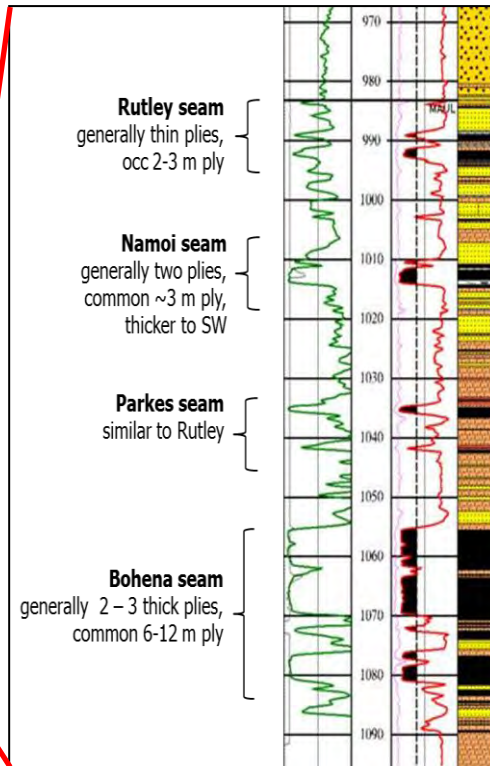
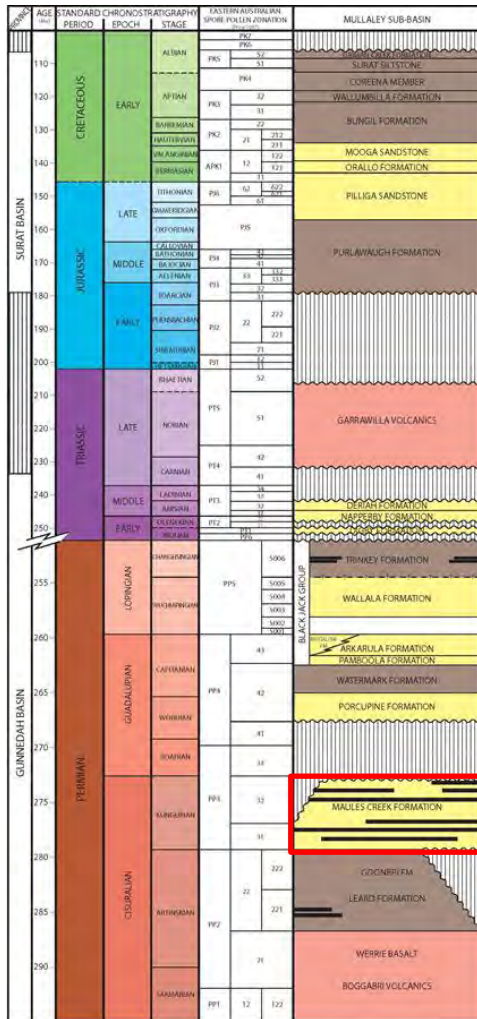
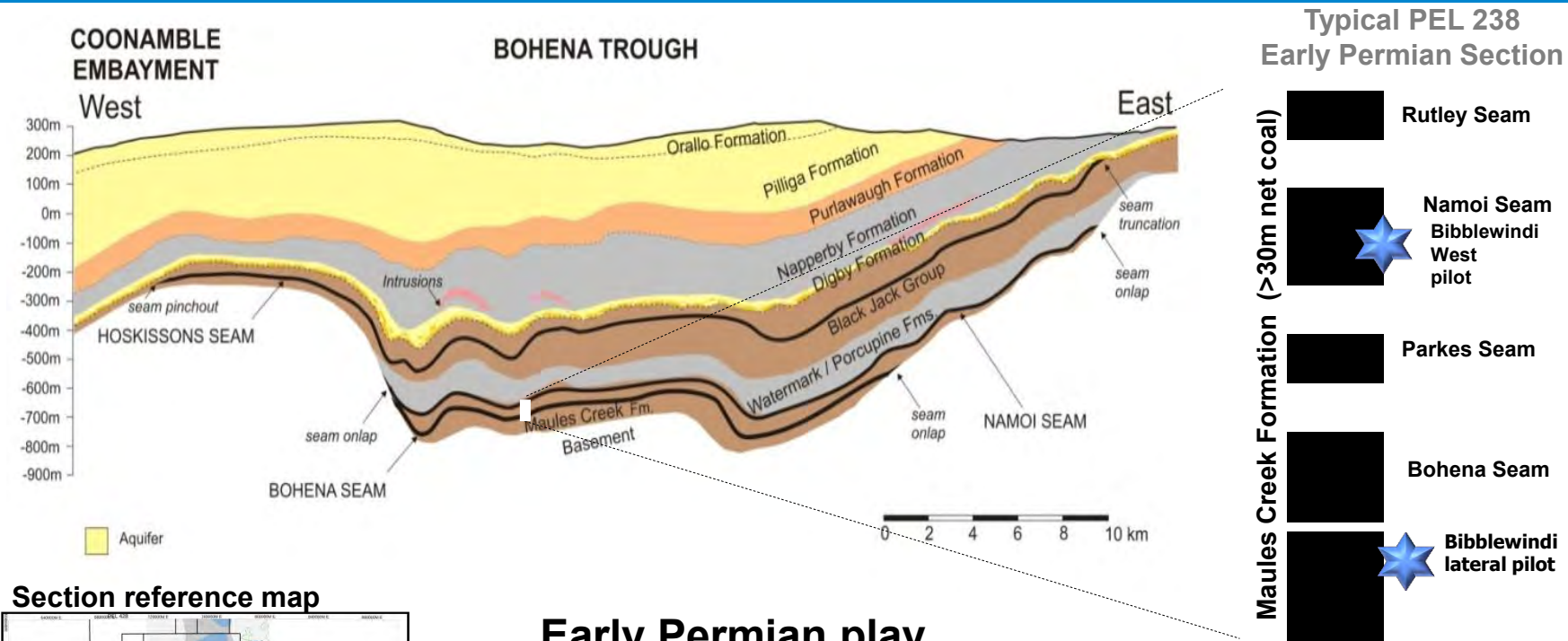


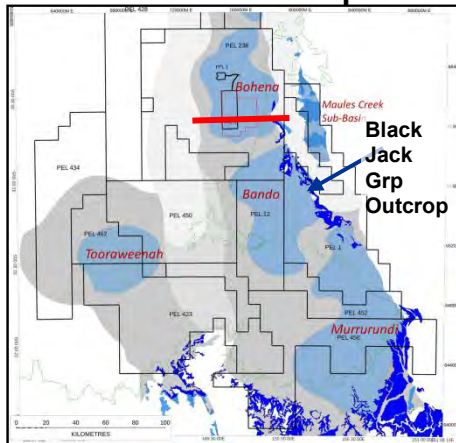
Early Permian Targets - Maules Creek Coal Seams



Gunnedah Basin – Pilliga Forrest Area



Section reference map



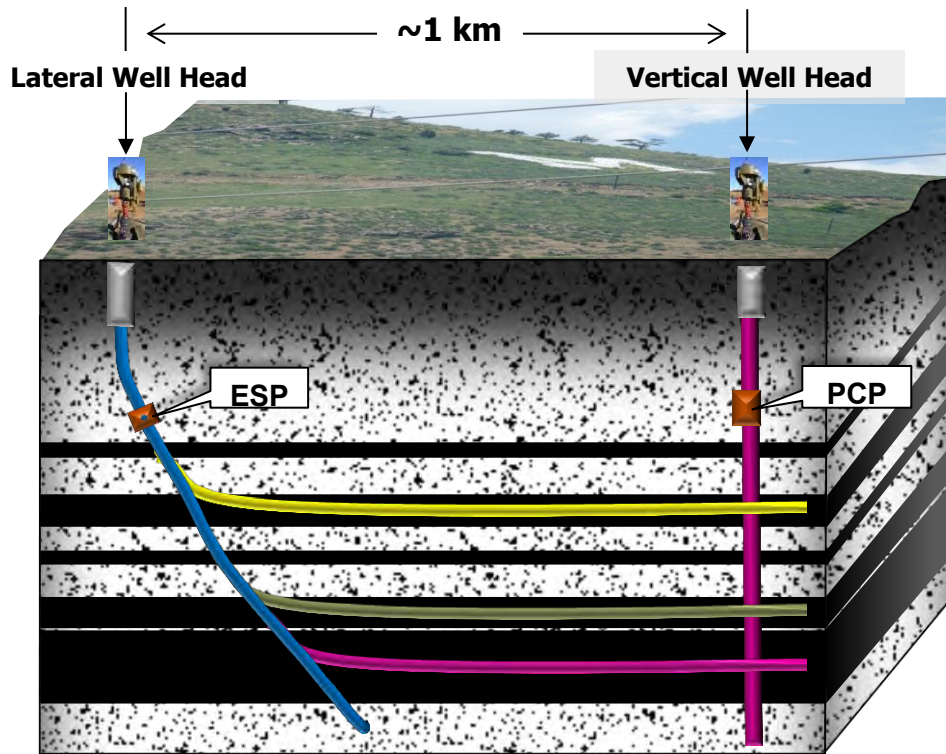
Early Permian play

- Depth: 800 – 1000 m
- Primary target seam - Bohena seam
- Individual seams up to 30 m thick
- High gas content
- Very thick net coal package: 5 – 42 m
- Excellent production performance from lateral pilots

Concept Development Design-Stacked Laterals

Narrabri PEL 238

The coal seams within Narrabri have performed best through the use of lateral drilling techniques



- Upcoming 2013/2014 drilling program will address critical uncertainties for multi stacked wells:
 - Drilling Technology-ability to achieve design within economic boundaries
 - Operability of wells:
 - Fines/solids production
 - Production of multiple seams
 - Dewatering time/to first gas
 - CO₂ production with time

Quad Laterals Offshore North America

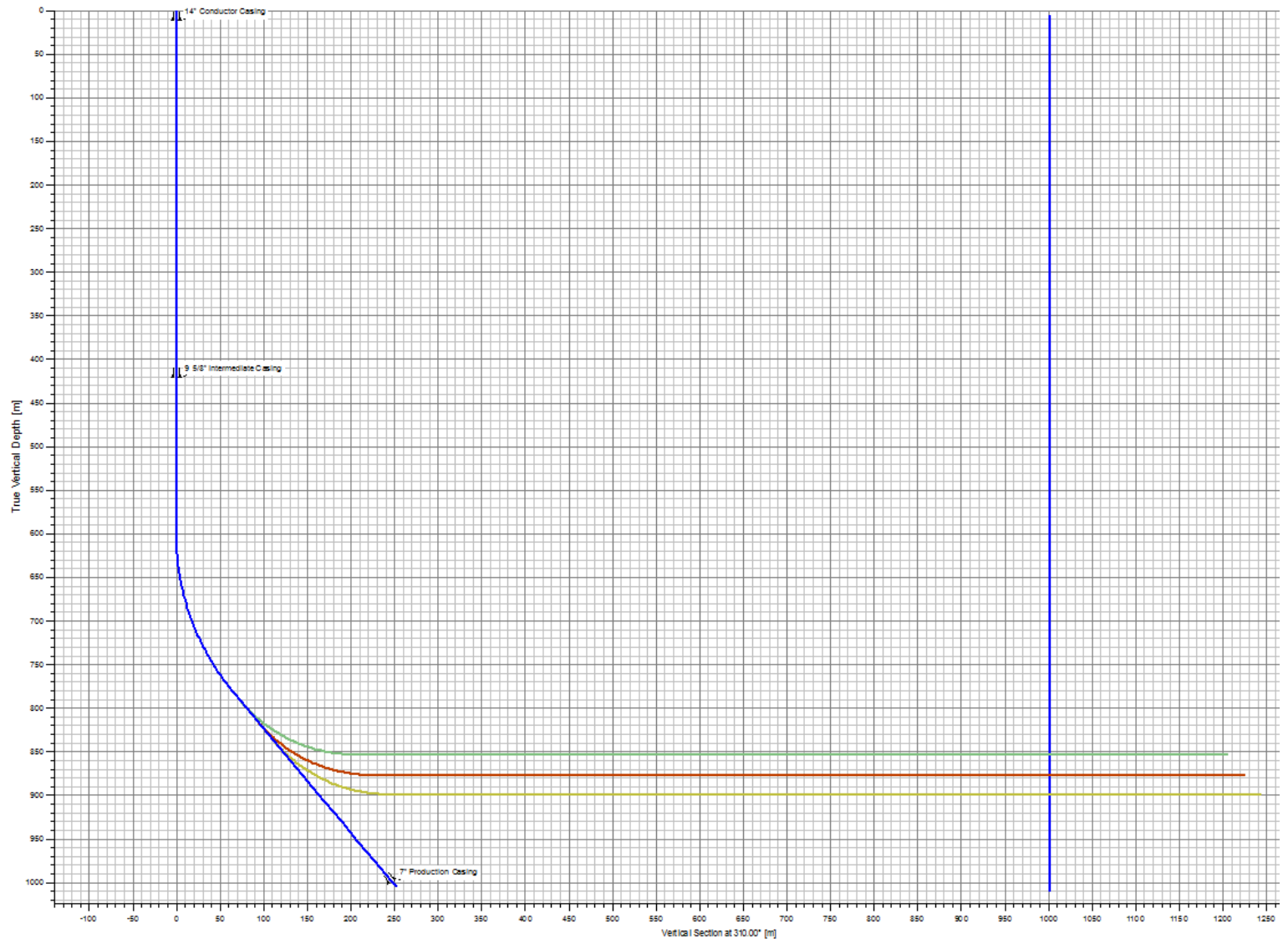
Showcase



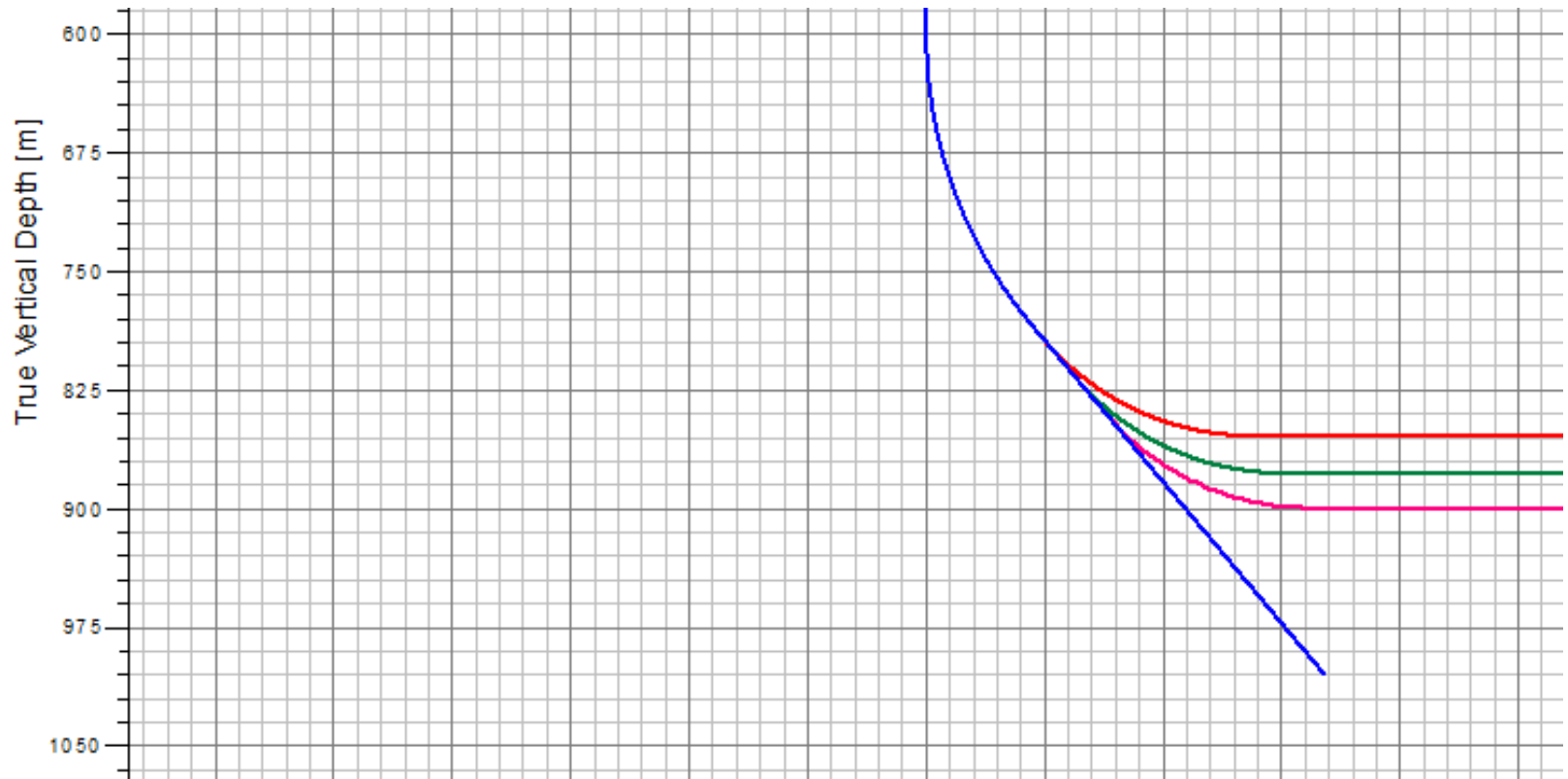
First Offshore Quad-Lateral Multilateral System Completed with Multiple Completion Windows in Deviated Well

Sperry Drilling Services completed the first offshore quad-lateral multilateral system utilizing multiple completion windows in a deviated well.

Section View of Dewhurst 22 and 23



Section View of Dewhurst-23 Plan Kick-Off Profile (10 deg per 30m build rate)



Dewhurst 19 Porcupine Formation 589m



Dewhurst 19 Porcupine Formation close up



Dewhurst 19 – Base of Porcupine Formation



Base of Porcupine Formation showing claystone

