

Narrabri Gas Project State Significant Development Application and Environmental Impact Statement

Narrabri Gas Project Community Consultative Committee

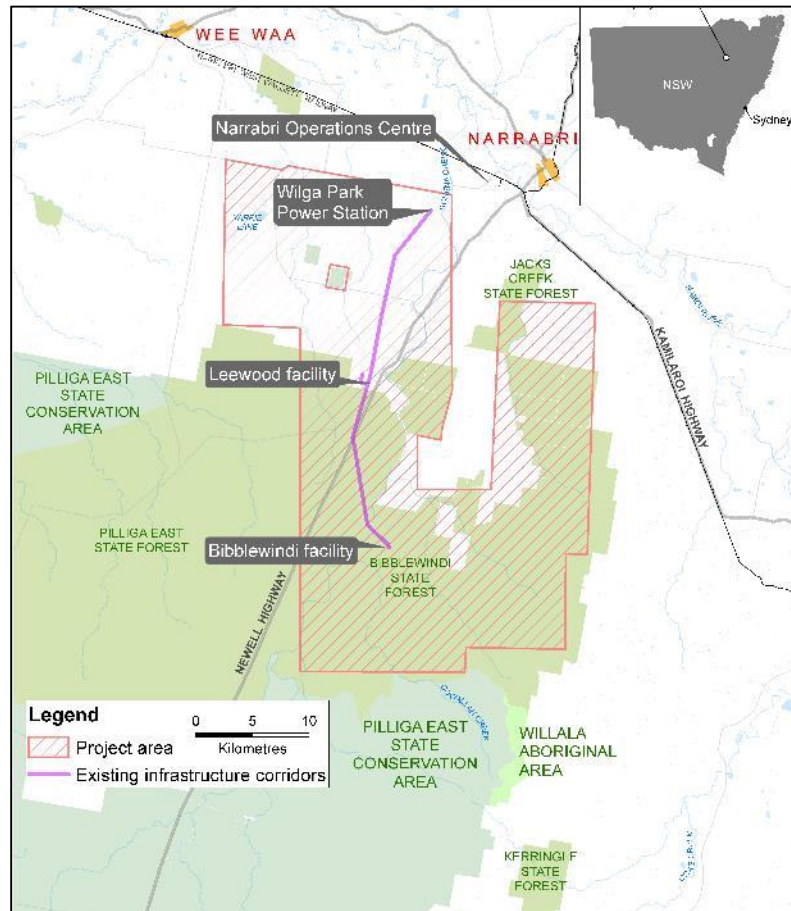
17 July 2018

Santos



Proposed Narrabri Gas Project Location

The Narrabri Gas Project area is located fully within the Petroleum Exploration Licence (PEL) 238 and Petroleum Assessment Lease (PAL) 2



- › Operations located on around 1,000ha or approx. 1% of 95,000ha project area
- › Majority of project area is state forest
- › No national park or nature reserve
- › No mapped Biophysical Strategic Agricultural Land (BSAL) within project area
- › Central gas and water processing facility located outside the Pilliga at the Leewood site
- › Up to 200TJ/day of gas would be made available to the NSW market

Narrabri Gas Project area, NSW

Proposed Narrabri Gas Project Facilities

The project includes wells, an underground gathering pipeline network, gas processing and gas compression



Tintsfield Pilot well

- › Up to 850 wells on a maximum of 425 sites
- › Lateral wells with artificial lift
- › Wellhead separation
- › Separate gas and water gathering pipelines
- › Nodal compression at Bibblewindi
- › Gas and water trunklines connecting Bibblewindi to Leewood
- › Dehydration, CO₂ removal and gas compression
- › Water storage, reverse osmosis and salt crystallisation, irrigation
- › Electricity generation
- › Pipeline tying to Moomba-Sydney pipeline will be constructed by APA Group and subject to a separate approval process

What is the Narrabri Gas Project SSDA and EIS?

The EIS is the major assessment document for the Narrabri Gas Project

- + The State Significant Development Application (SSDA) and EIS for the Narrabri Gas Project submitted to the NSW Department of Planning and Environment for assessment
- + The EIS is required to:
 - + Identify all potential impacts of the Narrabri Gas Project
 - + Assess those potential impacts
 - + Detail plans and procedures to mitigate and manage potential impacts
- + The EIS is a comprehensive document which:
 - + Contains almost 7,000 pages and 45 technical studies
 - + Draws on data from over 13,000 hours of on-ground ecological surveys; water monitoring activities dating back to 2010; over 1400 hours of background noise monitoring; and three months of baseline air quality data collection
 - + Contains reports, studies and modelling by scientific and environmental experts on areas including water, flora, fauna, soil, noise, air quality, cultural heritage and social impacts
 - + Details around 100 commitments which will assist to minimise the impact of the project
- + **The EIS concluded the risks to the environment are minimal and manageable**



Water sampling, Leewood Water Treatment Plant

Key findings of the EIS

The EIS concluded the Project can proceed safely with minimal and manageable risk to the environment



Bibblewindi Pilot well

- + Water available to farmers and the community will be unaffected
- + Drilling can be carried out safely adhering to the *NSW Well Integrity Code of Practice*, which was reviewed by the NSW Chief Scientist and Engineer
- + Significant impacts on threatened and endangered flora and fauna will be avoided
- + Known Aboriginal cultural heritage sites will be protected
- + The Project can coexist with current land uses including agriculture and forestry
- + Social impacts can be managed
- + Substantial economic benefits will be generated including:
 - + 1,300 jobs during construction and 200 ongoing positions during operations
 - + Around \$1.2 billion in royalties to NSW
 - + A regional benefit fund of up to \$120 million to support local community projects, programs and initiatives

27.4.2 – Employment

- Employment
 - Over the life of the Project it is projected that the NGP will increase employment by an average of 512 full time equivalent (FTE) direct and indirect jobs in NSW.
 - An average of 127 FTE jobs in Narrabri Local Government Area
 - An average of 161 FTE jobs in the wider region
 - An average of 224 FTE jobs in the rest of NSW
- Income
 - Increase real income in Narrabri LGA by \$526M
 - Increase real income in the wider region by \$690M
 - Increase real income across the rest of NSW by \$4.8B



Narrabri Gas Project

The EIS concluded the Project can proceed safely with minimal and manageable environmental risk



Supply
natural gas
to NSW

- › Project could supply up to half of NSW's natural gas needs
- › In NSW around 1 million homes and 33,000 businesses use natural gas
- › The jobs of more than 300,000 workers rely on an affordable supply of natural gas



Delivering
energy
safely with
minimal
impact

- › Activities in the Pilliga are in areas designated for natural gas development by the NSW Government
- › Detailed biodiversity, water, ecology and emissions studies undertaken
- › Will not drill on private land without landholder consent
- › Best practice drilling will ensure safe production of gas and protection of groundwater



Benefiting
regional
communities

- › 1,300 jobs during construction
- › Value-based landholder compensation
- › Estimated \$1.2 billion in royalties to the State
- › Up to \$120 million Regional Community Benefit Fund

The assessment of the SSDA and EIS will be robust and extensive.

- › EIS lodged to Department of Planning & Environment (DPE) Feb 2017
- › Public submissions invited by DPE during the ninety day exhibition period to May 2017 with approximately 23,000 submissions received
- › Santos response to submissions lodged April 2018
- › DPE advise that more information is required July 2018
- › The Government will review response
- › As there have been more than 25 submissions received by way of objection, the Independent Planning Commission will determine the Narrabri Gas Project
- › If approved, a number of conditions are likely to be imposed

Santos:

www.santos.com.au

Narrabri Gas Project:

www.narrabrigasproject.com.au

Department of Planning and Environment

<http://majorprojects.planning.nsw.gov.au>

